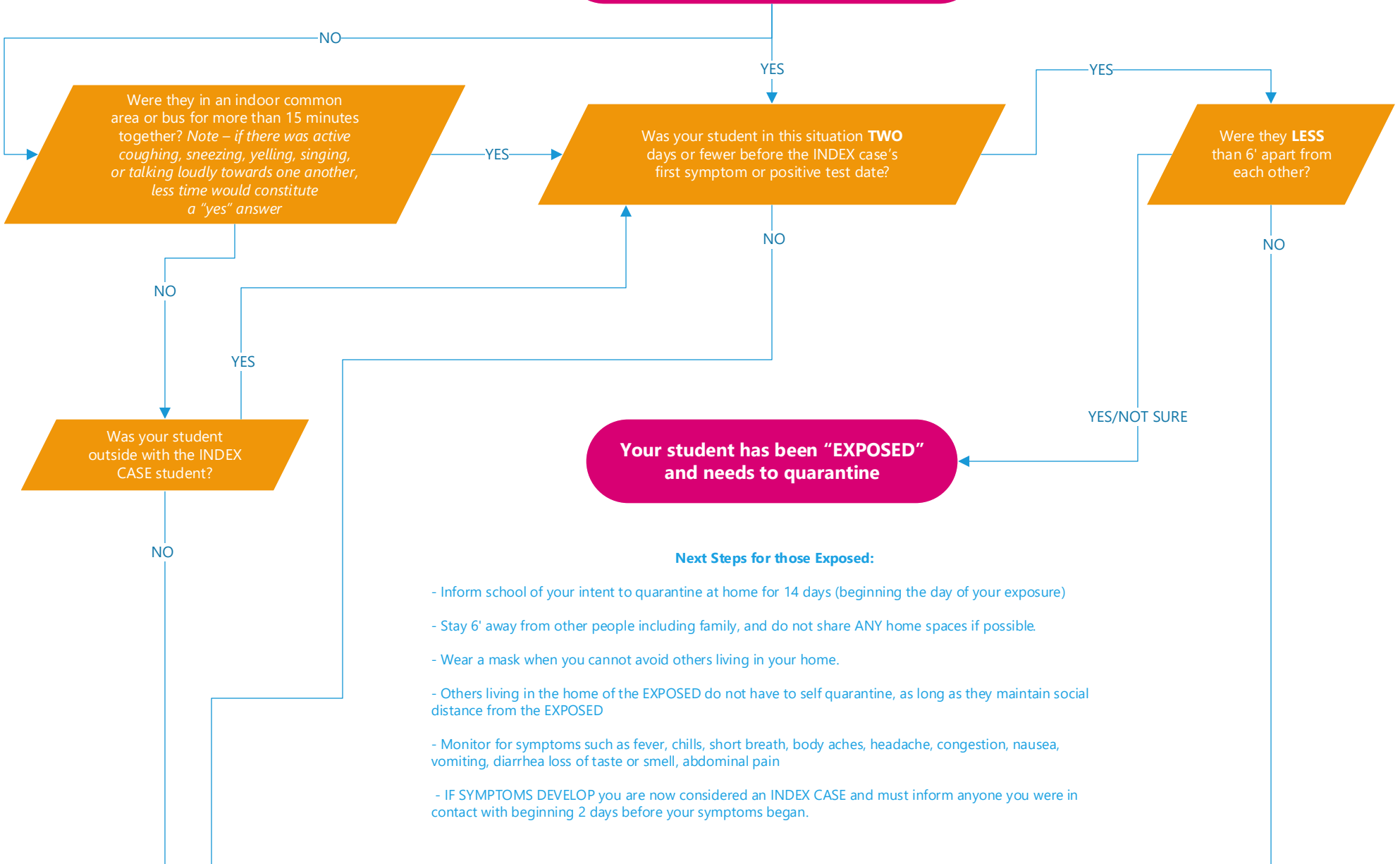


INDEX CASE: Someone with proven COVID, or someone with suspected COVID who hasn't been tested yet.

Was your student in the same classroom as the INDEX CASE student?



Your student has been "EXPOSED" and needs to quarantine

Next Steps for those Exposed:

- Inform school of your intent to quarantine at home for 14 days (beginning the day of your exposure)
- Stay 6' away from other people including family, and do not share ANY home spaces if possible.
- Wear a mask when you cannot avoid others living in your home.
- Others living in the home of the EXPOSED do not have to self quarantine, as long as they maintain social distance from the EXPOSED
- Monitor for symptoms such as fever, chills, short breath, body aches, headache, congestion, nausea, vomiting, diarrhea loss of taste or smell, abdominal pain
- IF SYMPTOMS DEVELOP you are now considered an INDEX CASE and must inform anyone you were in contact with beginning 2 days before your symptoms began.

Your student does not need to quarantine

Visit [CovidPathway.com](https://www.covidpathway.com) for more information about doing your part to stop the spread of COVID



Pediatric Physicians
Happy. Healthy. Safe